

Since the usage and finishing of the product is not under our control, we accept no liability for the success of the work and can therefore only guarantee the nature of our products as per the accompanying product data sheets and in accordance with our general terms and conditions of sale. The properties listed here represent no guarantee with respect to the eventual use of our products. We reserve the right to make changes due to technical advances. Any other technical information given in the course of a consultation must be confirmed in writing. Colours shown here are restricted by the printing techniques and may differ from those exhibited by the products themselves. We also reserve the right to make alterations to the product technology or design. Only the current version of this data sheet is valid. Such versions are accessible by anyone via the internet. The issue of the latest data sheet invalidates all those that have been published beforehand.

DURAFLEX

1/2

Thin-bed expansion joints profile with large legs

- Information Sheet -

DURAL



APPLICATION:

DURAFLEX expansion joint profiles by Dural are suitable for areas subject to medium amounts of wear and stresses. This includes offices and sales outlets. They can also be used outdoors (on balconies or facades). Their visible surface has a width of 8 mm, which corresponds to the customary width for expansion joints. When loads act at a point, legs 57 mm wide spread the load evenly throughout the flooring and the foundations. The profiles are available in heights from 6 to 15 mm. They should be led using the thin-bed technique.

Important: any expansion joints in the foundations need to be followed precisely.

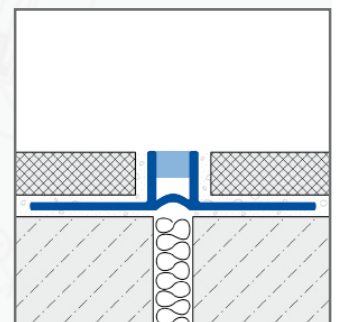
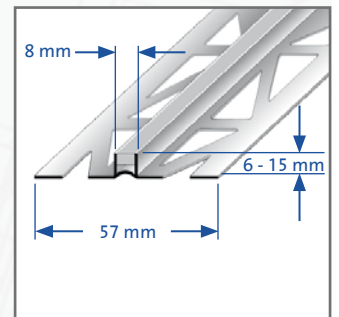
MATERIAL:

DURAFLEX expansion joint profiles are made of hard-soft PVC. That includes the legs. The following colours are available: white, beige, black and grey.

PROPERTIES:

DURAFLEX expansion joint profiles are resistant to UV exposure and do not include emollients. They are resistant to all kinds of chemical stresses that are usually experienced by tiles. Damage to the visible surface due to deformation or scratching is unlikely under normal circumstances.

N.B.: The use of coloured mortar with ultra fine colour pigments in conjunction with plastic profiles may result in permanent staining of the profiles. We recommend taking appropriate protective measures as a precaution.



DURAL GmbH
Südring 11
D-56412 Ruppach-Goldhausen
Tel. +49 (0) 2602/9261-0
Fax +49 (0) 2602/9261-50
info@dural.com

Thin-bed expansion joints profile with large legs

- Information Sheet -

For all products and materials, the following applies: The suitability of the material with regard to the expected mechanical loading and chemical exposure must be investigated carefully in each individual case. The generally recognised rules of good engineering practice must always be observed!

INSTALLATION:

1. DURAFLEX expansion joint profiles should be chosen to match the thickness of the tiles.
2. Tile adhesive should be applied around the junction using a serrated trowel.
3. Press the DURAFLEX profile into the adhesive bed and align it. Follow any existing joints in the foundations.
4. Spread mortar over the entire surface of the joint.
5. Press in tiles firmly and align them so that they are flush with the top edge of the profile. Lay the tiles without leaving any gaps.
6. Allow a joint of 2 mm around the profile itself.
7. Then fill the space between the tiles and the profile with grout.

MAINTENANCE:

DURAFLEX expansion joint profiles do not require any special maintenance. They are resistant to bacteria and fungus and are "automatically" cleaned when the tiles are cleaned. Cleaning agents should be free of hydrochloric and hydrofluoric acid and should not contain abrasives.

PRODUCT DATA:

MATERIAL:	Hard-soft PVC
COLOURS:	white / beige / black / grey
HEIGHTS:	6 / 8 / 10 / 12,5 / 15 mm
VISIBLE WIDTH:	8 mm
LENGTH:	250 cm

DURAL GmbH
Südring 11
D-56412 Ruppach-Goldhausen
Tel. +49 (0) 2602/9261-0
Fax +49 (0) 2602/9261-50
info@dural.com

Since the usage and finishing of the product is not under our control, we accept no liability for the success of the work and can therefore only guarantee the nature of our products as per the accompanying product data sheets and in accordance with our general terms and conditions of sale. The properties listed here represent no guarantee with respect to the eventual use of our products. We reserve the right to make changes due to technical advances. Any other technical information given in the course of a consultation must be confirmed in writing. Colours shown here are restricted by the printing techniques and may differ from those exhibited by the products themselves. We also reserve the right to make alterations to the product technology or design. Only the current version of this data sheet is valid. Such versions are accessible by anyone via the internet. The issue of the latest data sheet invalidates all those that have been published beforehand.

DURAFLEX

1/2

Thin-bed expansion joints profile with small legs

- Information Sheet -

DURAL



APPLICATION:

DURAFLEX expansion joint profiles by Dural are suitable for areas subject to medium amounts of wear and stresses. This includes offices and sales outlets. They can also be used outdoors (on balconies or facades). Their visible surface has a width of 8 mm, which corresponds to the customary width for expansion joints. When loads act at a point, legs 24 mm wide spread the load evenly throughout the flooring and the foundations. The profiles are available in heights from 6 to 15 mm. They should be led using the thin-bed technique. Important: any expansion joints in the foundations need to be followed precisely.

MATERIAL:

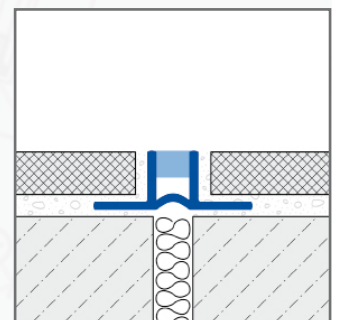
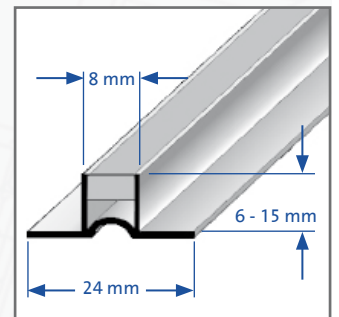
DURAFLEX expansion joint profiles are made of hard-soft PVC. That includes the legs. The following colour is available: grey.

PROPERTIES:

DURAFLEX expansion joint profiles are resistant to UV exposure and do not include emollients. They are resistant to all kinds of chemical stresses that are usually experienced by tiles. Damage to the visible surface due to deformation or scratching is unlikely under normal circumstances.

N.B.: The use of coloured mortar with ultra fine colour pigments in conjunction with plastic profiles may result in permanent staining of the profiles. We recommend taking appropriate protective measures as a precaution.

For all products and materials, the following applies: The suitability of the material with regard to the expected mechanical loading and chemical exposure must be investigated carefully in each individual case. The generally recognised rules of good engineering practice must always be observed!



DURAL GmbH

Südring 11

D-56412 Ruppach-Goldhausen

Tel. +49 (0) 2602/9261-0

Fax +49 (0) 2602/9261-50

info@dural.com

Thin-bed expansion joints profile with small legs

- Information Sheet -

INSTALLATION:

1. DURAFLEX expansion joint profiles should be chosen to match the thickness of the tiles.
2. Tile adhesive should be applied around the junction using a serrated trowel.
3. Press the DURAFLEX profile into the adhesive bed and align it. Follow any existing joints in the foundations.
4. Spread mortar over the entire surface of the joint.
5. Press in tiles firmly and align them so that they are flush with the top edge of the profile. Lay the tiles without leaving any gaps.
6. Allow a joint of 2 mm around the profile itself.
7. Then fill the space between the tiles and the profile with grout.

MAINTENANCE:

DURAFLEX expansion joint profiles do not require any special maintenance. They are resistant to bacteria and fungus and are „automatically“ cleaned when the tiles are cleaned. Cleaning agents should be free of hydrochloric and hydrofluoric acid and should not contain abrasives.

PRODUCT DATA:

MATERIAL:	Hard-soft PVC
COLOUR:	grey
HEIGHTS:	6 / 8 / 10 / 12,5 / 15 mm
WIDTH:	8 mm
LENGTH:	250 cm

DURAL GmbH
Südring 11
D-56412 Ruppach-Goldhausen
Tel. +49 (0) 2602/9261-0
Fax +49 (0) 2602/9261-50
info@dural.com

Since the usage and finishing of the product is not under our control, we accept no liability for the success of the work and can therefore only guarantee the nature of our products as per the accompanying product data sheets and in accordance with our general terms and conditions of sale. The properties listed here represent no guarantee with respect to the eventual use of our products. We reserve the right to make changes due to technical advances. Any other technical information given in the course of a consultation must be confirmed in writing. Colours shown here are restricted by the printing techniques and may differ from those exhibited by the products themselves. We also reserve the right to make alterations to the product technology or design. Only the current version of this data sheet is valid. Such versions are accessible by anyone via the internet. The issue of the latest data sheet invalidates all those that have been published beforehand.

DURAFLEX

1/2

Narrow expansion joint profiles for home and offices

- Information Sheet -

DURAL



APPLICATION:

DURAFLEX "extra narrow" is a narrow expansion joint profile from Dural that has been developed chiefly for homes and offices that are not used by large numbers of people. The visible surface of the profile is only 5 mm wide. This means it is indistinguishable from conventional mortar joints. When loads act at a point, wide legs spread the load evenly throughout the flooring and the foundations.

The extra narrow expansion joints are available in two versions, as an ordinary floor joint and for junctions with a wall. The heights of the profiles vary from 6 mm to 12.5 mm. DURAFLEX "extra narrow" profiles are laid using the thin-bed technique. Important: any expansion joints in the foundations need to be followed precisely.

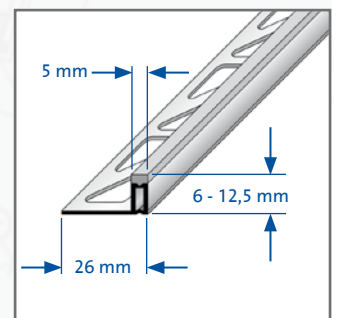
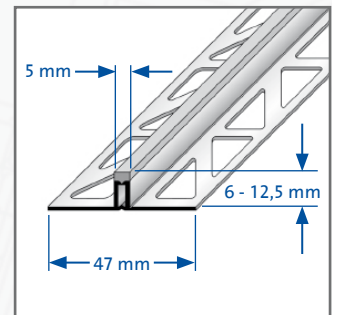
MATERIAL:

DURAFLEX "extra narrow" is made of hard-soft PVC, i.e. legs are made of coloured hard PVC. Available in grey.

PROPERTIES:

Properties: DURAFLEX "extra narrow" is resistant to UV exposure. The PVC-profiles are resistant to all kinds of chemical stresses that are usually experienced by tiles. Damage to the visible surface due to deformation or scratching is unlikely under normal circumstances.

N.B.: The use of coloured mortar with ultra fine colour pigments in conjunction with plastic profiles may result in permanent staining of the profiles. We recommend taking appropriate protective measures as a precaution.



DURAL GmbH

Südring 11

D-56412 Ruppach-Goldhausen

Tel. +49 (0) 2602/9261-0

Fax +49 (0) 2602/9261-50

info@dural.com

Narrow expansion joint profiles for home and offices

- Information Sheet -

For all products and materials, the following applies: The suitability of the material with regard to the expected mechanical loading and chemical exposure must be investigated carefully in each individual case. The generally recognised rules of good engineering practice must always be observed!

INSTALLATION:

1. DURAFLEX "extra narrow profiles should be chosen to match the thickness of the tiles. Tile adhesive should be applied around the junction using a serrated trowel.
2. Press the DURAFLEX profile into the adhesive bed and align it. Follow any existing joints in the foundations.
3. Spread mortar over the entire surface of the joint.
4. Press in tiles firmly and align them so that they are flush with the top edge of the profile. Lay the tiles without leaving any gaps.
5. Allow a joint of 2 mm around the profile itself.
6. Then fill the space between the tiles and the profile with grout.

MAINTENANCE:

DURAFLEX expansion joint profiles do not require any special maintenance. They are resistant to bacteria and fungus and are "automatically" cleaned when the tiles are cleaned. Cleaning agents should be free of hydrochloric and hydrofluoric acid and should not contain abrasives.

PRODUCT DATA:

MATERIAL:	Hard-soft PVC
COLOURS:	grey
HEIGHTS:	6 / 8 / 10 / 12,5 mm
VISIBLE WIDTH:	5 mm
LENGTH:	250 cm

DURAL GmbH
Südring 11
D-56412 Ruppach-Goldhausen
Tel. +49 (0) 2602/9261-0
Fax +49 (0) 2602/9261-50
info@dural.com

Since the usage and finishing of the product is not under our control, we accept no liability for the success of the work and can therefore only guarantee the nature of our products as per the accompanying product data sheets and in accordance with our general terms and conditions of sale. The properties listed here represent no guarantee with respect to the eventual use of our products. We reserve the right to make changes due to technical advances. Any other technical information given in the course of a consultation must be confirmed in writing. Colours shown here are restricted by the printing techniques and may differ from those exhibited by the products themselves. We also reserve the right to make alterations to the product technology or design. Only the current version of this data sheet is valid. Such versions are accessible by anyone via the internet. The issue of the latest data sheet invalidates all those that have been published beforehand.

DURAFLEX Metall

1/2

Expansion joint profiles using metal profiles

- Information Sheet -

DURAL



APPLICATION:

DURAFLEX metal profiles by Dural are made for particularly highly stressed floors. For example, the expansion joint profiles are suited for warehouses and production floors, underground garages and shopping centres as well as any floors that are to be cleaned using machines. The visible surface of the profile is 10 and 20 mm (aluminium) and 8 mm (stainless steel). Both legs are equipped with an EPDM expansion zone.

The specially developed expansion joint profile absorbs heavy stresses and spreads them evenly throughout the flooring and the foundations. It also prevents transmission of footfall and sounds from other objects. Important: any expansion joints in the foundations need to be followed precisely.

MATERIAL:

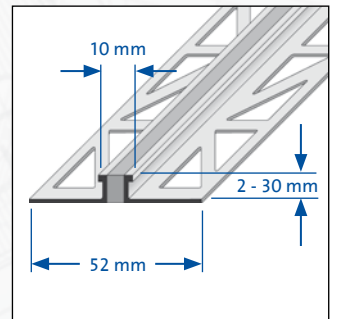
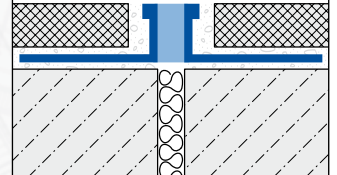
DURAFLEX expansion joint profiles using metal profiles are available in three versions: aluminium, brass and stainless steel. Other materials are available on request.

PROPERTIES:

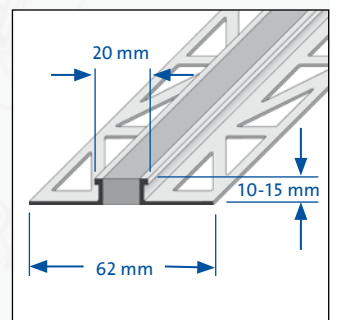
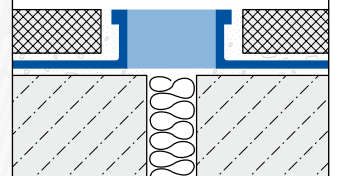
DURAFLEX aluminium profiles may be used wherever unusual chemical reactions are not to be expected. To avoid corrosion, it is necessary to take care with cement materials. Since aluminium is susceptible to alkalis, any mortar, tile adhesive or grout residues must be removed immediately from all visible surfaces. The profile must be completely embedded in the contact layer. This avoids the formation of pockets where alkaline solutions of water can collect.

DURAFLEX brass profiles can also be used in industrial concerns. They can withstand heavy loads and are largely resistant to the chemicals used for laying tiles. Important: brass oxidises in air, especially in humid conditions. The surface then develops a patina and its appearance is thus altered.

Aluminium / Brass, 10 mm



Aluminium, 20 mm



DURAL GmbH

Südring 11

D-56412 Ruppach-Goldhausen

Tel. +49 (0) 2602/9261-0

Fax +49 (0) 2602/9261-50

info@dural.com

EXP 06/2015

Resistant to chemicals

Weather-resistant

Light stress

Medium stress

Heavy stress

www.dural.com

Expansion joint profiles using metal profiles

- Information Sheet -

DURAFLEX stainless steel profiles are particularly suitable for areas that are subject to large amounts of chemicals and acids. Since they are also able to withstand the utmost mechanical demands, stainless steel profiles are used in the food industry, in hospitals, swimming pools and breweries.

For all products and materials, the following applies: The suitability of the material with regard to the expected mechanical loading and chemical exposure must be investigated carefully in each individual case. The generally recognised rules of good engineering practice must always be observed!

INSTALLATION:

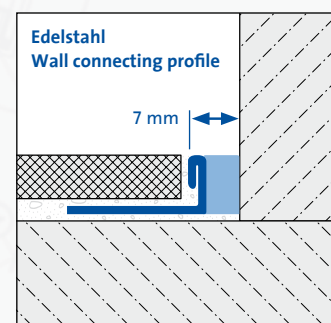
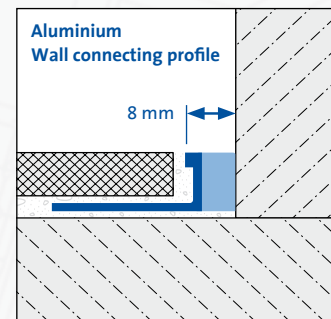
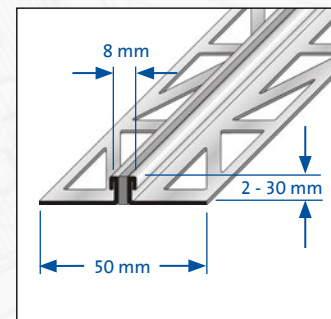
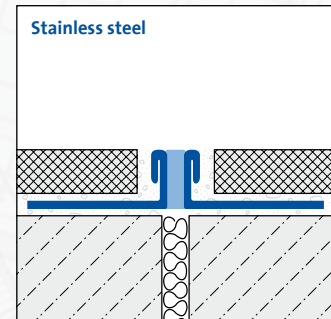
1. DURAFLEX expansion joint profiles should be chosen to match the thickness of the tiles
2. Tile adhesive should be applied around the junction using a serrated trowel.
3. Press the DURAFLEX profile into the adhesive bed and align it. Follow any existing joints in the foundations.
4. Spread mortar over the entire surface of the joint.
5. Press in tiles firmly and align them so that they are flush with the top edge of the profile. Lay the tiles without leaving any gaps.
6. Allow a joint of 2 mm around the profile itself.
7. Then fill the space between the tiles and the profile with grout.

MAINTENANCE:

DURAFLEX profiles do not require any special maintenance. They are resistant to bacteria and fungus and are “automatically” cleaned when the tiles are cleaned. Cleaning agents should be free of hydrochloric and hydrofluoric acid and should not contain abrasives.

PRODUCT DATA:

MATERIAL:	Aluminium / Brass / Stainless steel
INSERTS / COLOUR:	EPDM / grey
HEIGHTS:	Alu (10 mm) = 2 / 3 / 4,5 / 6 / 8 / 10 / 12,5 / 15 / 16,5 / 18 / 20 / 22 / 25 / 30 mm Alu (20 mm) = 10 / 12,5 / 15 mm Brass = 3 / 4,5 / 6 / 8 / 10 / 12,5 / 15 / 18 / 20 / 25 / 30 mm Stainless steel = 2 / 3 / 4 / 6 / 8 / 10 / 12,5 / 15 / 16,5 / 17,5 / 20 / 22 / 25 / 30 mm
VISIBLE WIDTH:	Aluminium = 10 / 20 mm; Brass = 10 mm; Stainless steel = 8 mm
LENGTH:	250 cm



DURAL GmbH
Südring 11
D-56412 Ruppach-Goldhausen
Tel. +49 (0) 2602/9261-0
Fax +49 (0) 2602/9261-50
info@dural.com